

# dosage

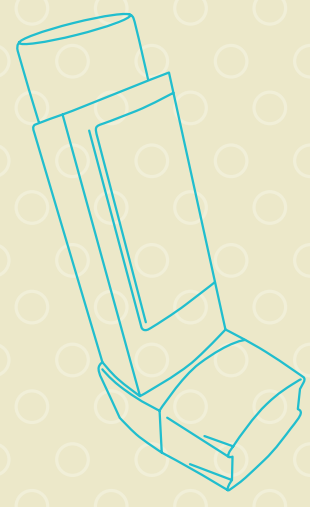
## DOSE EQUIVALENCE AND BACK TITRATION FOR COMMONLY USED INHALED CORTICOSTEROIDS

- Fluticasone is twice as potent as beclomethasone or budesonide<sup>1</sup>
- When titrating dose, wait 12 weeks to judge effect<sup>2</sup>
- Back titrate stable patients by 25% of total daily dose<sup>2</sup>
- The dose response curve for inhaled corticosteroids flattens around 500-1000µg beclomethasone/budesonide (250-500µg fluticasone) per day<sup>1</sup>

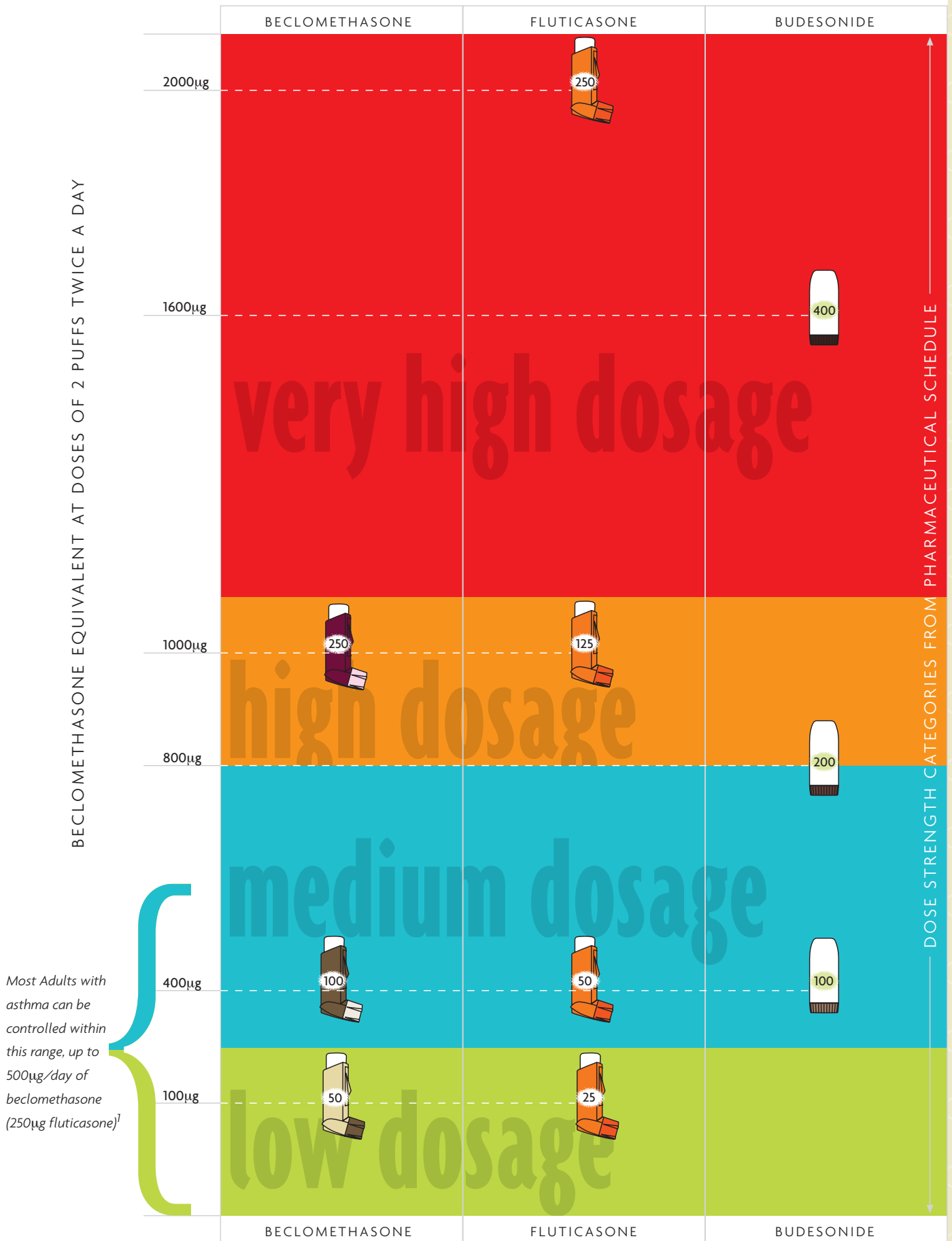
*References:*

<sup>1</sup>Best Practice Evidence-Based Guideline  
*The Diagnosis and Treatment of Adult Asthma, September 2002*  
 New Zealand Guidelines Group

<sup>2</sup>British Guideline on the Management of Asthma  
*Quick Reference Guide, October 2002*  
 Scottish Intercollegiate Guidelines Network ([www.sign.ac.uk](http://www.sign.ac.uk))  
 British Thoracic Society ([www.brit-thoracic.org.uk](http://www.brit-thoracic.org.uk))



# DOSE EQUIVALENCE FOR COMMONLY USED INHALED CORTICOSTEROID INHALERS



Note: Strength categories are consistent with those outlined in the Pharmaceutical Schedule